

## 200CENT ROUND 250LM SWING 30XL TRIMLESS IP54

BATHROOM - SALLE DE BAINS

Adjustable 0° - 27°

114x134 mm - h = 70 mm

Material: CALCYT® plaster



Black Black  
Nero Nero  
Schwarz Schwarz  
Zwart Zwart  
Noir Noir  
Negro Negro

Ref N° 200 BL BL



White Black  
Bianco Nero  
Weiß Schwarz  
Wit Zwart  
Blanc Noir  
Blanco Negro

Ref N° 200 WH BL



Black Chrome  
Nero Cromo  
Schwarz Chrom  
Zwart Chrom  
Noir Chrome  
Negro Cromo

Ref N° 200 BL CR



White White  
Bianco Bianco  
Weiß Weiß  
Wit Wit  
Blanc Blanc  
Blanco Blanco

Ref N° 200 WH WH



Black Gold  
Nero Oro  
Schwarz Gold  
Zwart Goud  
Noir Or  
Negro Oro

Ref N° 200 BL GO



White Gold  
Bianco Oro  
Weiß Gold  
Wit Goud  
Blanc Or  
Blanco Oro

Ref N° 200 WH GO



Black Copper  
Nero Rame  
Schwarz Kupfer  
Zwart Koper  
Noir Cuivre  
Negro Cobre

Ref N° 200 BL CO



White Copper  
Bianco Rame  
Weiß Kupfer  
Wit Koper  
Blanc Cuivre  
Blanco Cobre

Ref N° 200 WH CO



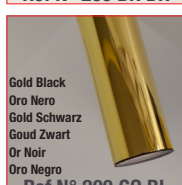
Bronze Bronze  
Bronzo Bronzo  
Bronze Bronze  
Brons Brons  
Bronze Bronze  
Bronce Bronce

Ref N° 200 BR BR



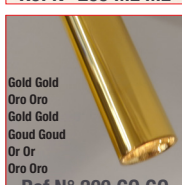
Brass Brass  
Ottone Ottone  
Messing Messing  
Messing Messing  
Latón Latón  
Latón Latón

Ref N° 200 ME ME



Gold Black  
Oro Nero  
Gold Schwarz  
Goud Zwart  
Or Noir  
Oro Negro

Ref N° 200 GO BL



Gold Gold  
Oro Oro  
Gold Gold  
Goud Goud  
Or Or  
Oro Oro

Ref N° 200 GO GO

### 200CENT ROUND SWING 30XL 250LM CRI 92

2200°K	2700°K	3000°K	4000°K
REF N° 552 27 530	REF N° 552 27 930	REF N° 552 27 830	REF N° 552 27 730

3 W - 250LM - 2 step MacAdam - **A+**  
Serial wiring - - - -   
Requires remote LED driver - 1050mA  
Standard narrowbeam 12° - Optional 8° beam  
Ultra low glare (UGR < 13)

### REMOTE LED DRIVER ON/OFF

REF N° 697 00 015 min.2W max. 39W

REF N° 697 00 025 min.2W max. 50W

230V/50Hz - - current controlled  
 - IP20 - 1050mA - not dimmable

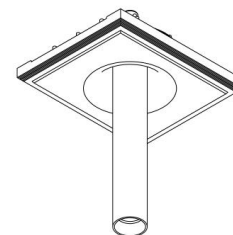
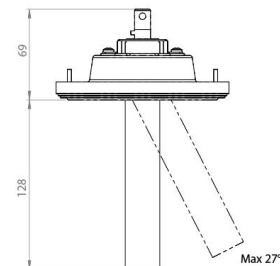
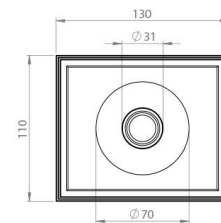
### REMOTE LED DRIVER DIM

REF N° 697 60 025 min.3W max. 60W

1-10V DALI PUSH

REF N° 697 70 050 min 2W max 45W PHASE DIM

230V/50Hz - - current controlled  
 - IP20 - 1050mA - dimmable



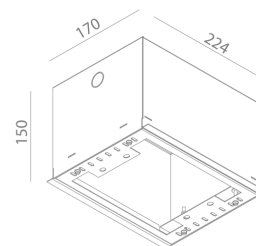
### INSTALLATION KIT

**STANDARD** (included) installation system for ceiling 9 - 12 - 15 mm

REF N° 200 99 025 installation system for gypsum ceiling 25 mm

REF N° 200 99 030 installation system for gypsum ceiling 30 mm

REF N° 827 00 000 Concrete box 200Cent - Galvanized steel



### BEAM ANGLES

**STANDARD** (included) beam angle 12°

REF N° 203 20 008 (option) beam angle 8°

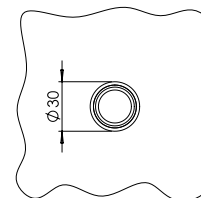
## 200CENT ROUND 500LM SWING 90 TRIM IP54

BATHROOM - SALLE DE BAINS

Adjustable 0° - 90°

Ø27 mm - h = 70 mm

Material: Aluminium



### 200CENT ROUND SWING 90 500LM CRI 92

2200°K	2700°K	3000°K	4000°K
REF N° 553 28 530	REF N° 553 28 930	REF N° 553 28 830	REF N° 553 28 730

5,9 W - 500LM - 2 step MacAdam - **A+**  
Serial wiring - - **CE** - -   
Requires remote LED driver - 700mA  
Standard Perfectbeam 24° - Optional 44° beam  
Ultra low glare (UGR < 13)

### REMOTE LED DRIVER ON/OFF

REF N° 697 00 015 min.2W max. 32W

REF N° 697 00 025 min.2W max. 50W

230V/50Hz - - current controlled  
 - **CE** - IP20 - 700mA - not dimmable

### REMOTE LED DRIVER DIM

REF N° 697 60 040 min.3W max. 60W

1-10V DALI PUSH

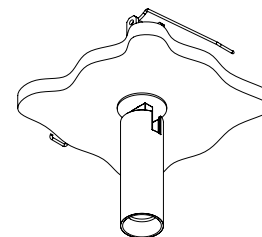
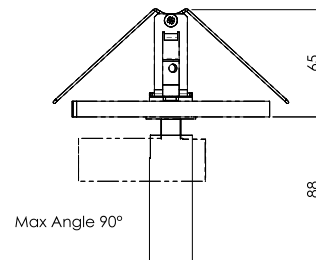
REF N° 697 30 015 min 2W max 20W DALI

REF N° 697 60 015 min 2W max 20W 1-10V PUSH

REF N° 697 77 010 min 2W max 10W PHASE DIM

REF N° 697 77 020 min 11W max 20W PHASE DIM

230V/50Hz - - current controlled  
 - **CE** - IP20 - 700mA - dimmable



### INSTALLATION KIT

REF N° 680 01 027 standard holesaw Ø 27 mm



### BEAM ANGLES

**STANDARD** (included) beam angle 24°  
REF N° 203 20 044 (option) beam angle 44°

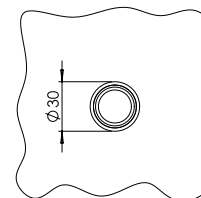
## 200CENT ROUND 750LM SWING 90 TRIM IP54

BATHROOM - SALLE DE BAINS

Adjustable 0° - 90°

Ø27 mm - h = 70 mm

Material: Aluminium



### 200CENT ROUND SWING 90 750LM CRI 92

2400°K	2700°K	3000°K	4000°K
REF N° 553 29 530	REF N° 553 29 930	REF N° 553 29 830	REF N° 553 29 730

6,2 W - 750LM - 2 step MacAdam - **A+**  
Serial wiring - - - -   
Requires remote LED driver - 250mA  
Standard beam angle 36°

### REMOTE LED DRIVER ON/OFF

REF N° 697 00 040 min.2W max. 30W

REF N° 697 00 080 min.27W max. 67W

230V/50Hz - - current controlled  
 - - IP20 - 250mA - not dimmable

### REMOTE LED DRIVER DIM

REF N° 697 60 040 min.3W max. 30W

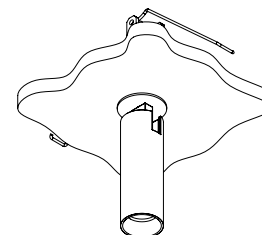
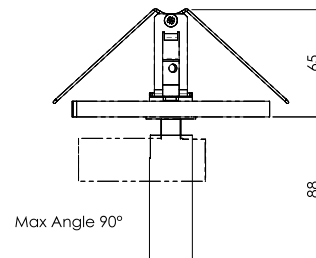
1-10V DALI PUSH

REF N° 697 30 070 min 33W max 65W DALI

REF N° 697 60 080 min 27W max 67W 1-10V PUSH

REF N° 697 72 020 min 6W max 12,5W PHASE DIM

230V/50Hz - - current controlled  
 - - IP20 - 250mA - dimmable



### INSTALLATION KIT

REF N° 680 01 027 standard holesaw Ø 27 mm



### BEAM ANGLES

STANDARD (included) beam angle 36°