

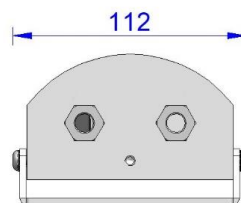
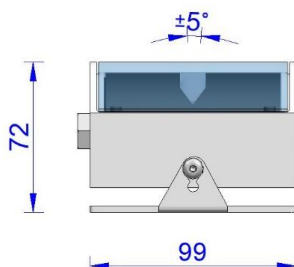
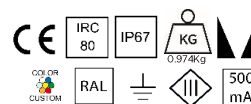
inédit

LIGHTING

BOL

Applique « lame de lumière »

Light blade fixture



. Matière / Material:

Corps Aluminium anodisé / Body in anodized Aluminium

. Fixation / Fixing:

Verre trempé extra blanc / Tempered glass extra white

Sur étrier / On bracket

. Source / LED Source:

1x4 LED OSRAM 3-SDCM

. T° de couleur / Color T°:

3000K / 4000K / DynW / RGBW

. Flux produit / Product flux:

286lm (caractérisé @ 3000K - (5°x150°))

. Efficacité / Efficacy:

45lm/W

. IRC / CRI:

80+ / 90+

. Optique / Optic:

120°/5°

. Orientable / Adjustable:

Oui / Yes

. Dimensions / Dimensions:

99mm x 112mm x 72mm

. Poids / Weight:

0.974Kg

. Protection / Protection:

IP67

. Indice Choc / Impact:

-

. Charge Statique / Static load:

-

. Karcher / High pressure:

Non / No

. Classe Protection / Protection:

Classe III / Classe I (en option avec driver intégré / In option if driver included)

. Puissance / Power:

6.3W

. Alimentation / Voltage:

500mA

. Convertisseur / Driver:

Déporté / Remote

. Pilotage / Control:

On-Off / 1-10V / DALI / DMX

. Câblage / Cables:

1ml standard - (2x0.75mm² noir) / (8x0.22mm² noir)

. Normes / Norms:

NF-EN 60529/60598-1/60598-2-1/60598-2-3/60598-2-5/62471

. Garantie / Warranty:

2 ans standard / 2 years standard

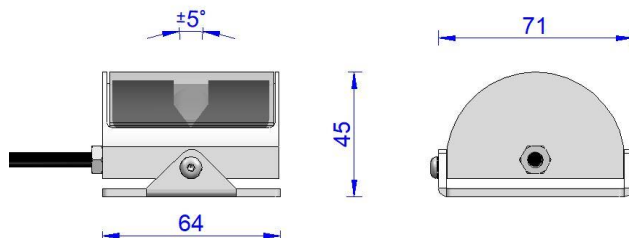
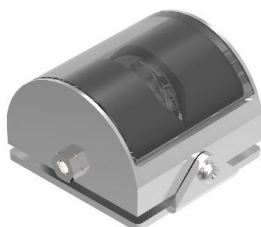
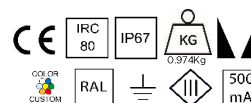
inédit

LIGHTING

MINI BOL

Petite applique effet lame de lumière

Small luminaire blade of light effect



. Matière / Material:

Corps Aluminium anodisé / Body in anodized Aluminium

. Fixation / Fixing:

Verre trempé extra blanc / Tempered glass extra white

Sur étrier / On bracket

. Source / LED Source:

1x4 LED OSRAM 3-SDCM

. T° de couleur / Color T°:

3000K / 4000K / DynW / RGBW

. Flux produit / Product flux:

-

. Efficacité / Efficacy:

-

. IRC / CRI:

80+ / 90+

. Optique / Optic:

120°/5°

. Orientable / Adjustable:

Oui / Yes

. Dimensions / Dimensions:

64mm x 71mm x 45mm

. Poids / Weight:

0.261Kg

. Protection / Protection:

IP67

. Indice Choc / Impact:

-

. Charge Statique / Static load:

-

. Kärcher / High pressure:

Non / No

. Classe Protection / Protection:

Classe III / Classe I (en option avec driver intégré / In option if driver included)

. Puissance / Power:

6.3W

. Alimentation / Voltage:

500mA

. Convertisseur / Driver:

Déporté / Remote

. Pilotage / Control:

On-Off / 1-10V / DALI / DMX

. Câblage / Cables:

1ml standard - (2x0.75mm² noir)

. Normes / Norms:

NF-EN 60529/60598-1/60598-2-1/60598-2-3/60598-2-5/62471

. Garantie / Warranty:

2 ans standard / 2 years standard