

inédit

LIGHTING

Cesta Metálica

Miguel Milá. 1962

Table Lamps



A duel between fragility and strength: the Cesta Metálica is the updated version of the Cesta, with its own distinct features. It comes with or without a smooth leather handle; a stark contrast to the stern, rigid structure, that gently holds an opal globe without neck. Miguel Milá mastered the strength of steel by placing at its centre a delicate opal silhouette, and a touch of soft leather. A seamless expression of strength and emotion, combined with everyday practicality. The lantern is produced manually by European craftsmen, using traditional glass blowing techniques for its opal shade.

The Cesta family is made up of the Cesta, Cestita, Cestita Bateria, Cestita Alubat, Cesta Metálica, and Cestita Metálica table lamps, the Wally wall lamp, and the Globo Cesta and Globo Cestita pendant lamps, symbols of Mediterranean warmth and well-being. These masterpieces by Miguel Milá are part of our Design Classics collection, a series of objects created throughout the Modernist era.

General description:

Stainless steel structure.

White opal glass lampshade.

Available with or without natural colour leather handle.

Electric cable length: 2,25 m / 88.6"

Approximate weight (unpacked):

Without leather: 5,1 kg / 11.24 lb

With leather: 5,2 kg / 11.46 lb

Technical information:

Includes dimmable light source (CE market):

LED bulb: 12 W / 1.521 lm / 2700K / A++ (subject to updates in LED technology).

E27 - E26 / Max. hgt. 130 mm / 5.1" / Max. power 60 W

Includes dimmer (dimmable light source required).

Compatible with bulbs of the Energy efficiency class (E.E.C): A++... E.

Suitable only for indoor use.

Always use the light source recommended or equivalent.

Input voltage: 100, 120, 230 Vac.

(50 Hz / 60 Hz). According to destination

inédit

LIGHTING

Cesta Metálica

Miguel Milá. 1962
Table Lamps

Regulations:

CE
UNE-EN 60598
UNE-EN 55015
UNE-EN 60529

UL
Dry location only
UL-153
E-352592

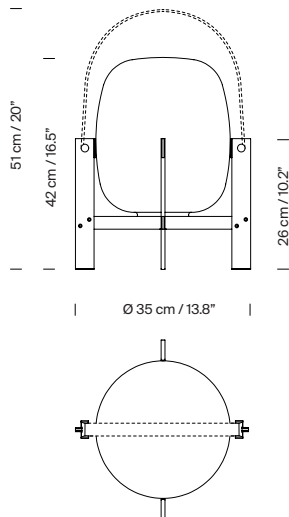
Maintenance:

Clean with a smooth cloth. Do not use ammonia, solvents or abrasive cleaning products.

Others:

The lamp is delivered in one package.
The assembly instructions are delivered with the product.

Model:



Collection:

Table lamps



Cesta



Cestita



Cestita Bateria



Cestita Alubat



Cesta Metálica



Cestita Metálica

Wall lamps



Wally

Pendant lamps



Globo Cesta

inédit

LIGHTING

Cestita

Miguel Milá. 1962

Table Lamps



Inspired by the traditional lanterns that light up homes along the coast, rural estates and open terraces, Cesta is one of the most iconic lamps created by Miguel Milá. This lamp object can be picked up and carried easily, ideal for both tabletops and floors. The opal glass shade is supported by a beautiful cherry wooden structure. It is produced manually by European craftsmen, using traditional steam bending techniques for the wood, which is delicately polished and sturdily put together. Despite its peculiarity (or rather because of it) the lamp's design and function remain contemporary.

Miguel Milá is one of the most renowned Spanish industrial designers. He began his career in the fifties, and is one of the country's pioneers of the discipline. To the present day, his works have remained true contemporary classics.

The Cesta family is made up of the Cesta, Cestita, Cestita Batería, Cestita Alubat, Cesta Metálica, and Cestita Metálica table lamps, the Wally wall lamp, and the Globo Cesta and Globo Cestita pendant lamps, symbols of Mediterranean warmth and well-being. These masterpieces by Miguel Milá are part of our Design Classics collection, a series of objects created throughout the Modernist era.

General description:

Cherry wood structure.

White opal glass or white opal polyethylene lampshade.

Electric cable length: 1,40 m / 55.1"

Approximate weight (unpacked):

1,1 kg / 2.4 lb

Technical information:

Light source included (CE market):

LED bulb: 4,5 W / 470 lm / 2700K / A++ (subject to updates in LED technology).

E27 - E26 / Max. hgt. 105 mm / 4.1" / Max. power 40 W

Compatible with bulbs of the Energy efficiency class (E.E.C): A++... E.

Suitable only for indoor use.

Always use the light source recommended or equivalent.

Input voltage: 100, 120, 230 Vac.

(50 Hz / 60 Hz). According to destination

inédit

LIGHTING

Cestita

Miguel Milá. 1962
Table Lamps

Regulations:

CE
UNE-EN 60598
UNE-EN 55015
UNE-EN 60529

UL
Dry location only
UL-153
E-352592

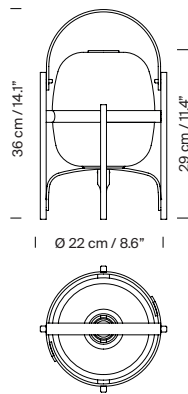
Maintenance:

Clean with a smooth cloth. Do not use ammonia, solvents or abrasive cleaning products.

Others:

The lamp is delivered in one package.
The assembly instructions are delivered with the product.

Model:



Collection:

Table lamps



Cesta



Cestita



Cestita Bateria



Cestita Alubat



Cesta Metálica



Cestita Metálica

Wall lamps



Wally

Pendant lamps



Globo Cesta

inédit

LIGHTING

Cestita Batería

Miguel Milá. 2017

Table Lamps



Cestita Batería is the new member of the Cesta family: a portable, cordless version. As with all of Milá's objects, this version champions industrial craftsmanship, by combining functionalism and the legacy of local artisan creation. With this new version, the lamp's features are enhanced with the help of technology. Keeping with the family's warmth and spirit, it features an opal glass shade supported by a beautiful cherry wooden structure. It is produced and assembled manually by European craftsmen, using traditional, steam bending techniques for the wood, and glassblowing techniques for its opal shade. Cestita Batería is a lantern that creates a beautiful ambience anywhere; depicting Chinese shadows in the garden, or emanating light from any corner.

The lamp aligns with the spirit of TRAMO the company Milá founded to produce his own work: simple and essential objects of all kinds, that make a house feel like a home.

The Cesta family is made up of the Cesta, Cestita, Cestita Batería, Cesta Metálica, and Cestita Metálica table lamps, the Wally wall lamp, and the Globo Cesta and Globo Cestita pendant lamps, symbols of Mediterranean warmth and well-being. These masterpieces by Miguel Milá are part of our Design Classics collection, a series of objects created throughout the Modernist era.

General description:

Cherry wood structure.

White opal glass or white opal polyethylene lampshade.

Switch incorporated into the luminaire with 3 intensity levels.

Lithium battery.

Range: 5h on high power / 12h on medium power / 24h on minimum power.

Includes charger.

Battery charging time: 6.5h

To prevent wood degradation, the lamp should not be left outdoors permanently.

Approximate weight (unpacked):

1,3 kg / 2.8 lb

inédit

LIGHTING

Cestita Batería

Miguel Milá. 2017
Table Lamps

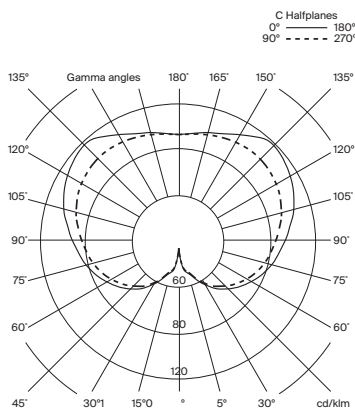
Technical information:

Light source included (dimmable).
LED Module

Built-in dimmable LED
Rated input wattage: 2,5 W
Operating voltage: 2,9 VDC
Colour Temp.: 2.700 K
CRI: 90
Lifetime: 40.000 h
Luminous flux: 313 lm

3 light output intensities.
Energy efficiency class (E.E.C): A++... A.
Lamp suitable only for indoor use.
Always use this light source.

Input voltage: 100 ~ 240 Vac.
(50 Hz / 60 Hz). According to destination.



Regulations:

CE
UNE-EN 60598
UNE-EN 55015
UNE-EN 60529

Maintenance:

Clean with a smooth cloth. Do not use ammonia, solvents or abrasive cleaning products.

Others:

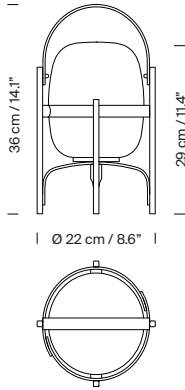
The lamp is delivered in one package.
The assembly instructions are delivered with the product.

inédit

LIGHTING

Cestita Batería
Miguel Milá. 2017
Table Lamps

Model:



Collection:
Table lamps



Cesta



Cestita



Cestita Batería



Cesta Metálica



Cestita Metálica

Wall lamps



Wally

Pendant lamps



Globo Cesta

inédit

LIGHTING

Cestita Metálica

Miguel Milá. 1962
Table Lamps



The Cestita Metálica is meant to stay put, hence its lack of a handle. Miguel Milá mastered the strength of steel by placing at its centre a delicate opal glass silhouette. A seamless expression of strength and emotion, combined with everyday practicality. Just like its bigger sister, the Cestita can be positioned in any corner or shelf, enhancing everything it illuminates.

The lantern is produced and assembled manually by European craftsmen, using traditional glass blowing techniques for its opal shade.

The Cesta family is made up of the Cesta, Cestita, Cestita Batería, Cestita Alubat, Cesta Metálica, and Cestita Metálica table lamps, the Wally wall lamp, and the Globo Cesta and Globo Cestita pendant lamps, symbols of Mediterranean warmth and well-being. These masterpieces by Miguel Milá are part of our Design Classics collection, a series of objects created throughout the Modernist era.

General description:

Stainless steel structure.

White opal glass lampshade.

Electric cable length: 2,25 m / 88.6"

Approximate weight (unpacked):

2,5 kg / 5.51 lb

Technical information:

Includes dimmable light source (CE market):

LED bulb: 4,5 W / 470 lm / 2700K / A++ (subject to updates in LED technology).

E27 - E26 / Max. hgt. 105 mm / 4.1" / Max. power 40 W

Includes dimmer (dimmable light source required).

Compatible with bulbs of the Energy efficiency class (E.E.C): A+... E.

Suitable only for indoor use.

Always use the light source recommended or equivalent.

Input voltage: 100, 120, 230 Vac.

(50 Hz / 60 Hz). According to destination

inédit

LIGHTING

Cestita Metálica

Miguel Milá. 1962
Table Lamps

Regulations:

CE
UNE-EN 60598
UNE-EN 55015
UNE-EN 60529

UL
Dry location only
UL-153
E-352592

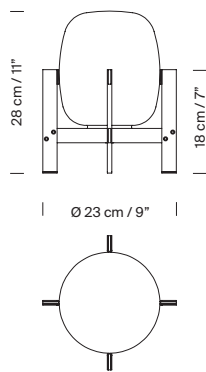
Maintenance:

Clean with a smooth cloth. Do not use ammonia, solvents or abrasive cleaning products.

Others:

The lamp is delivered in one package.
The assembly instructions are delivered with the product.

Model:



Collection:

Table lamps



Cesta



Cestita



Cestita Batería



Cestita Alubat



Cesta Metálica



Cestita Metálica

Wall lamps



Wally



Globo Cesta